



Adopt Classroom

Adopt-A-Classroom programs offer structured opportunities for your team, organization, or company to make a positive impact.

Variations in volunteer hours, financial commitment, project size, and community recognition, ensure the right size for your needs.

PARTNER PROGRAMS



School Friend

\$500 - \$1,999



Classroom Helper

\$2,000 - \$4,999



Classroom Buddy

\$5,000 - \$9,999



Classroom Partner

\$10,000+

Select the Adopt-A-Classroom program that best aligns with your desired community engagement. From team building and employee engagement, to fostering a socially responsible culture, being a Learning Together partner benefits your employees while also helping children and families in our local community.

Learning Together Partner Benefits

Gain leadership experience

Develop legacy projects for local community

Experience team building

Build employee morale

Expand community giving profile

Create new employee recognition opportunities

Leverage potential tax deduction

Develop legacy projects for the local community

Meet Learning Together

Since its inception in 1969, our objective is that each child, no matter where they may fall on a spectrum, will receive the foundation they need to be successful and reach their full potential. Learning Together is licensed as a Five-Star Center, the highest rating possible through the N.C. Division of Child Development and Early Education, and has a national NAEYC accreditation.



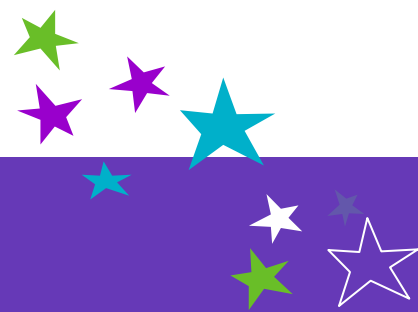
LEARNING TOGETHER, INC.

568 E. Lenoir Street | Suite 204 | Raleigh, NC 27601

Tax ID: 51-0161593 | www.learningtogether.org

colleen@learningtogether.org | 919.856.7453

SCHOOL FRIEND



This Adopt-A-Classroom program will introduce your group to our mission and school while creating community engagement opportunities for positive volunteer experiences.

Benefits:

- Gain Leadership experience
- Experience team building
- Enjoy community engagement
- Leverage potential tax deduction
- Build employee morale and job satisfaction

Adopt Classroom

Level I

An ideal School Friend is...

A small group (up to 8 people) with limited time and/or budget that is seeking volunteer opportunities

School Friends have an...

- Interest in personal connection to mission
- Interest in occasional or annual volunteering
- Ability to make charitable contribution of \$500

School Friend	Charitable Contribution	Volunteer Time	In Kind Support
What	Minimum \$500 investment	Ranges from 8 to 30 cumulative hours on-site and coordinated with team leader	Up to \$500 value in donated in-kind items that support school needs
Scope	<ul style="list-style-type: none"> • Matched volunteer hours • Annual pledge • Monthly donations • Fundraising efforts 	<ul style="list-style-type: none"> • Administrative assistance • Teacher assistance • Campus impact 	<ul style="list-style-type: none"> • Classroom supply drive • Coat drive • Food pantry drive • Administrative supplies • Technology drive • Internal fundraisers
Frequency	One time to annual contribution	From one time to multiple sessions throughout year	One time to annual contribution
What it can look like for you	Any financial contribution to our program or through a Learning Together event (Rock Paper Scissors, Giving Tuesday, fundraiser)	on set day/time, your team comes to the school grounds to complete a specific project within a set time period	<ul style="list-style-type: none"> • Internal communications to promote drive, collect materials, and deliver to school • Supplying items for volunteer time

CLASSROOM HELPER



In this Adopt-A-Classroom program, groups customize their engagement to emphasize fundraising, volunteering at campus events, and supporting organizational needs to enhance the learning environment.

Personalize your community engagement to make the most of your experience while supporting Learning Together's services.

Benefits:

- Build and develop legacy projects for the local community
- Inclusion of your name/company outside your sponsored classroom
- Inclusion of your name/company on school website and social media
- Foster a socially responsible employee culture



Level 2

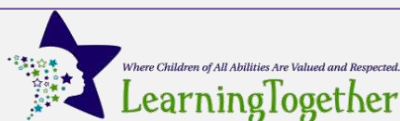
An ideal Classroom Helper is...

Small to medium size group of up to 12 with a low to medium budget

Classroom Helpers have an...

- Interest in building a connection with school
- Interest in volunteering several times a year
- Interest in engagement with students
- Ability to make a charitable contribution of \$2,000

Classroom Helper	Charitable Contribution	Volunteer Time	In Kind Support
What	Minimum \$2,000 investment	Ranges from 8 to 30 cumulative hours on-site and coordinated with team leader	Up to \$850 value in donated in-kind items that support school current needs
Scope	<ul style="list-style-type: none"> • Matched volunteer hours • Annual pledge • Monthly donations • Fundraising efforts 	<ul style="list-style-type: none"> • Administrative assistance • Teacher assistance • Campus impact • Learning Together events 	<ul style="list-style-type: none"> • Classroom supply drive • Coat drive • Food pantry drive • Administrative supplies • Technology drive • Internal fundraisers
Frequency	Annual contribution	From one month to multiple sessions throughout the year	Annual contribution
What it can look like for you	Any financial contribution to our program or through a Learning Together event (Rock Paper Scissors, Giving Tuesday, fundraiser)	On set day/time, team of up to 12 people comes to the school grounds to complete a specific project within a set time period	<ul style="list-style-type: none"> • Internal communications to promote drive, collect materials, and deliver to school • Supplying items for volunteer time



LEARNING TOGETHER, INC.

568 E. Lenoir Street | Suite 204 | Raleigh, NC 27601
 Tax ID: 51-0161593 | www.learningtogether.org
colleen@learningtogether.org | 919.856.7453

CLASSROOM BUDDY

This Adopt-A-Classroom program enables your group to make a direct impact on our student's lives via one-on-one relationships in the classroom fostered by medium sized projects. At this level, your volunteers incorporate educational and artistic projects into their volunteer schedule while getting to know our students and teachers.

Benefits:

- Inclusion of your name/company outside your sponsored classroom
- Inclusion of your name/company on school website and social media
- Establish a corporate specific charity and cause to enhance community profile
- Create new employee recognition opportunities
- Build and develop legacy projects for the local community
- Become a leader in classroom involvement, building relationships with Learning Together students through planned programs and activities

Adopt Classroom

★ Level 3

An ideal Classroom Buddy is...

Medium size groups of up to 20 volunteers with a mid-size budget

Classroom Buddies have an...

- Interest in volunteering at least 3-4 times a year
- Interest in student engagement through activities
- Ability to participate in campus events
- Ability to make a contribution of \$5,000
- Ability to advocate outside of volunteer activities

Classroom Buddy	Charitable Contribution	Volunteer Time	In Kind Support
What	Minimum \$5,000 investment	Ranges from 40 to 100 cumulative hours on-site and coordinated with team leader	Up to \$1,000 value in donated in-kind items that support school needs
Scope	<ul style="list-style-type: none"> • Matched volunteer hours • Annual pledge • Monthly donations • Fundraising efforts 	<ul style="list-style-type: none"> • Bi-annual classroom activities • Learning Together events • Annual committee service • Administrative assistance • Teacher assistance 	<ul style="list-style-type: none"> • Classroom supply drive • Coat drive • Food pantry drive • Administrative supplies • Technology drive • Internal fundraisers
Frequency	Annual contribution	3-4 volunteer sessions annually	Annual contribution
What it can look like for you	Any financial contribution to our program or through a Learning Together event (Rock Paper Scissors, Giving Tuesday, fundraiser)	On set day/time, team of up to 20 people comes to the school grounds to complete a specific project within a set time period	<ul style="list-style-type: none"> • Fundraisers • Internal communications to promote drive, collection list, space to store items during collection • Supplying items for volunteer time

CLASSROOM PARTNER

This comprehensive Adopt-A-Classroom program combining ways to contribute, engage, and make a lasting impact. It is ideal for corporate groups seeking visible ways to help the local community through involvement. For example, your leadership or on boarding program can incorporate community service at Learning Together to grow leadership skills and foster teamwork.

Benefits

- Establishment of corporate charity and partner for a year
- Foster a socially responsible employee culture
- Inclusion of your name/company outside your sponsored classroom
- Inclusion of your name/company on school website and social media
- Create a legacy project that will represent the partnership
- Create programmatic approach to employee volunteerism
- Directly impact Learning Together teachers, families, and students through three tiers of engagement

Adopt  **Classroom**

 **Level 4**

An ideal Classroom Partner is...

A medium to large size group of up to 30 with a large budget, guaranteed matched volunteer hours, or volunteer giving

Classroom Partner have an...

- Interest in becoming a fully engaged partner
- Interest in unique engagement opportunities
- Ability to publicly advocate for Learning Together
- Ability to make a contribution of \$10,000+

Classroom Partner	Charitable Contribution	Volunteer Time	In Kind Support
What	Minimum \$10,000 investment	Ranges from 60 to 140 cumulative hours on-site and coordinated with team leader	Up to \$2,000 value in in-kind items that support Learning Together's current needs
Scope	<ul style="list-style-type: none"> • Matched volunteer hours • Annual pledge • Monthly donations • Fundraising efforts • Donor promotion and partner recruitment 	<ul style="list-style-type: none"> • Quarterly classroom buddy activities • Learning Together events • Annual committee service • Administrative assistance • Teacher assistance 	<ul style="list-style-type: none"> • Classroom supply drive • Coat drive • Food pantry drive • Administrative supplies • Technology drive • Internal fundraisers
Frequency	Annual contribution	Minimum 4 volunteer sessions per year	Annual contribution
What it can look like for you	Any financial contribution to our program or through a Learning Together event (Rock Paper Scissors, Giving Tuesday, fundraiser)	<ul style="list-style-type: none"> • On set day/time, team of up to 30 people at school grounds to complete a specific project within a set time period • Internal volunteer time spent on creating a legacy project 	<ul style="list-style-type: none"> • Fundraisers • Internal communications to promote drive • Supplying items for volunteer time